

Claves y oportunidades de financiación europea de I+D en salud

16 de diciembre de 2025
CaixaForum València



Transformando la investigación en salud a través de alianzas estratégicas. Oportunidades de participación en la Iniciativa de Salud Innovadora (IHI)

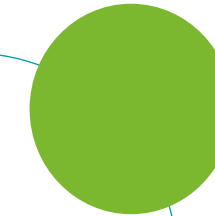
Iris Ontavilla

IHI - Jefa de Unidad - Comunicaciones





Introducción a IHI





Bold collaborations, transforming health

Who?

IHI is a cross-sector
EU public-private
partnership



What?

We create bold collaborations
– excellent health research
and innovation projects that
bring together the best minds



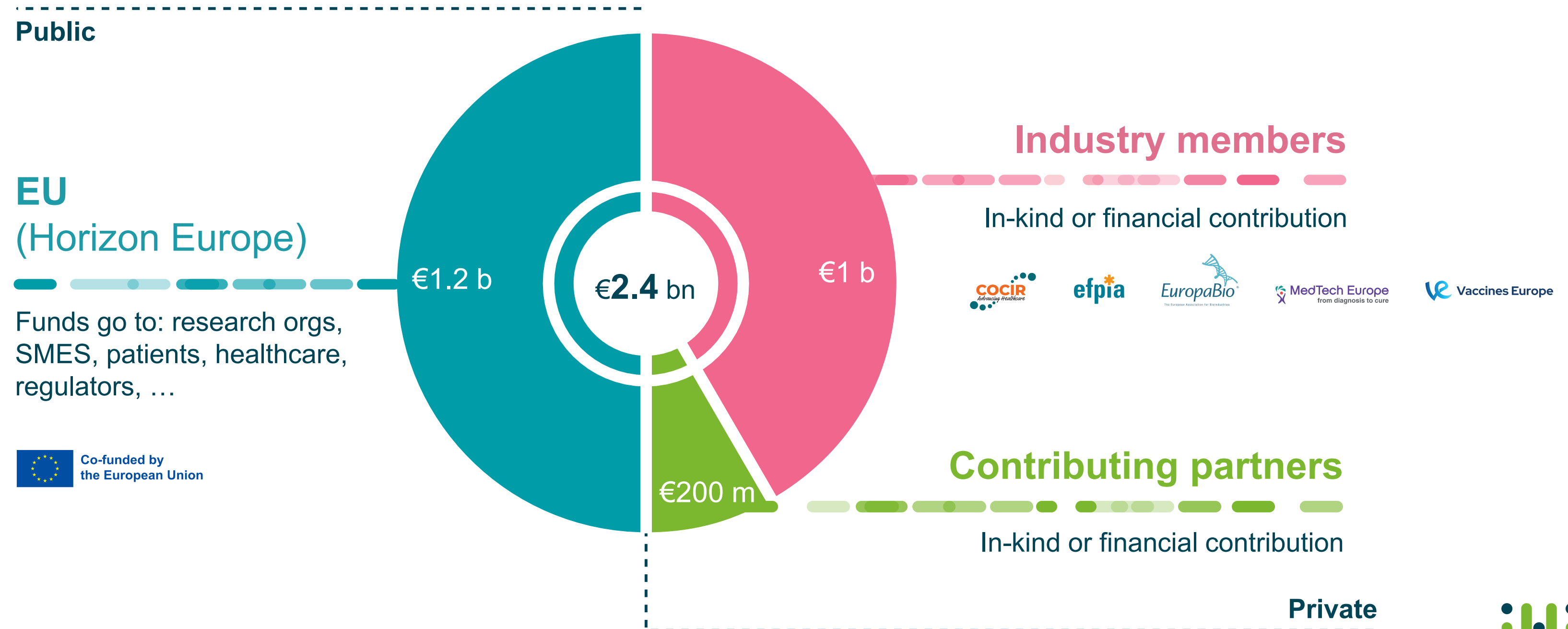
Why?

Our ultimate goal is to
transform health across
the entire spectrum of care,
especially in areas of unmet
need

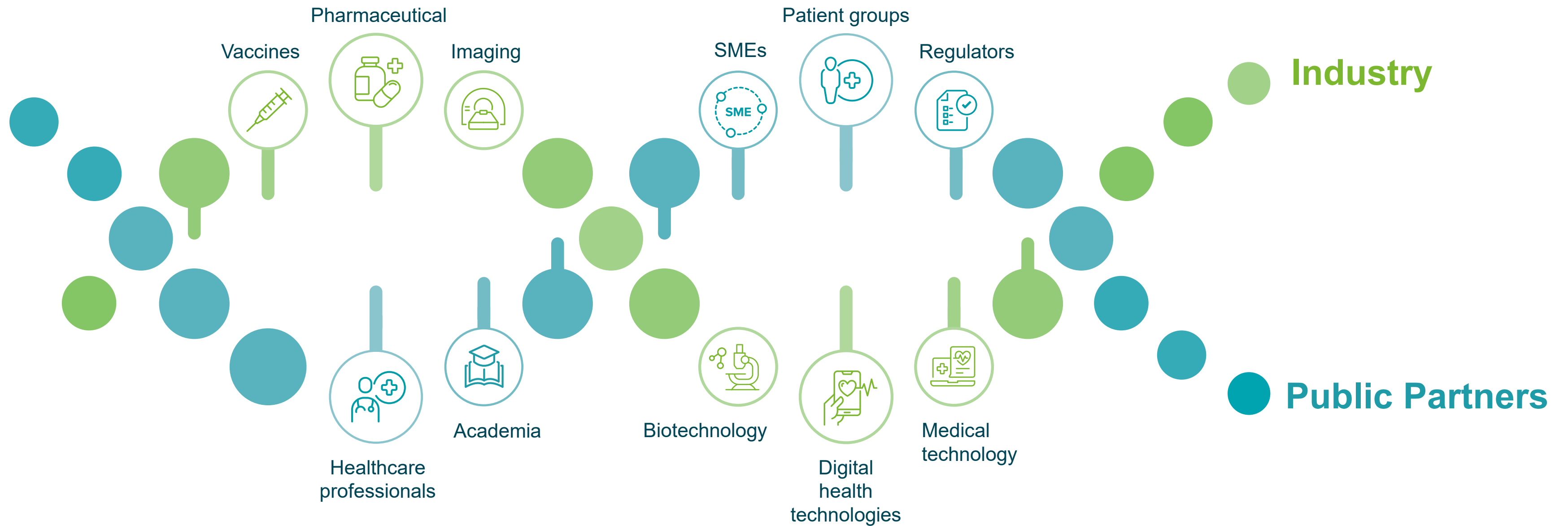


We are a public-private partnership...

The partners contribute equally to our €2.4 billion budget

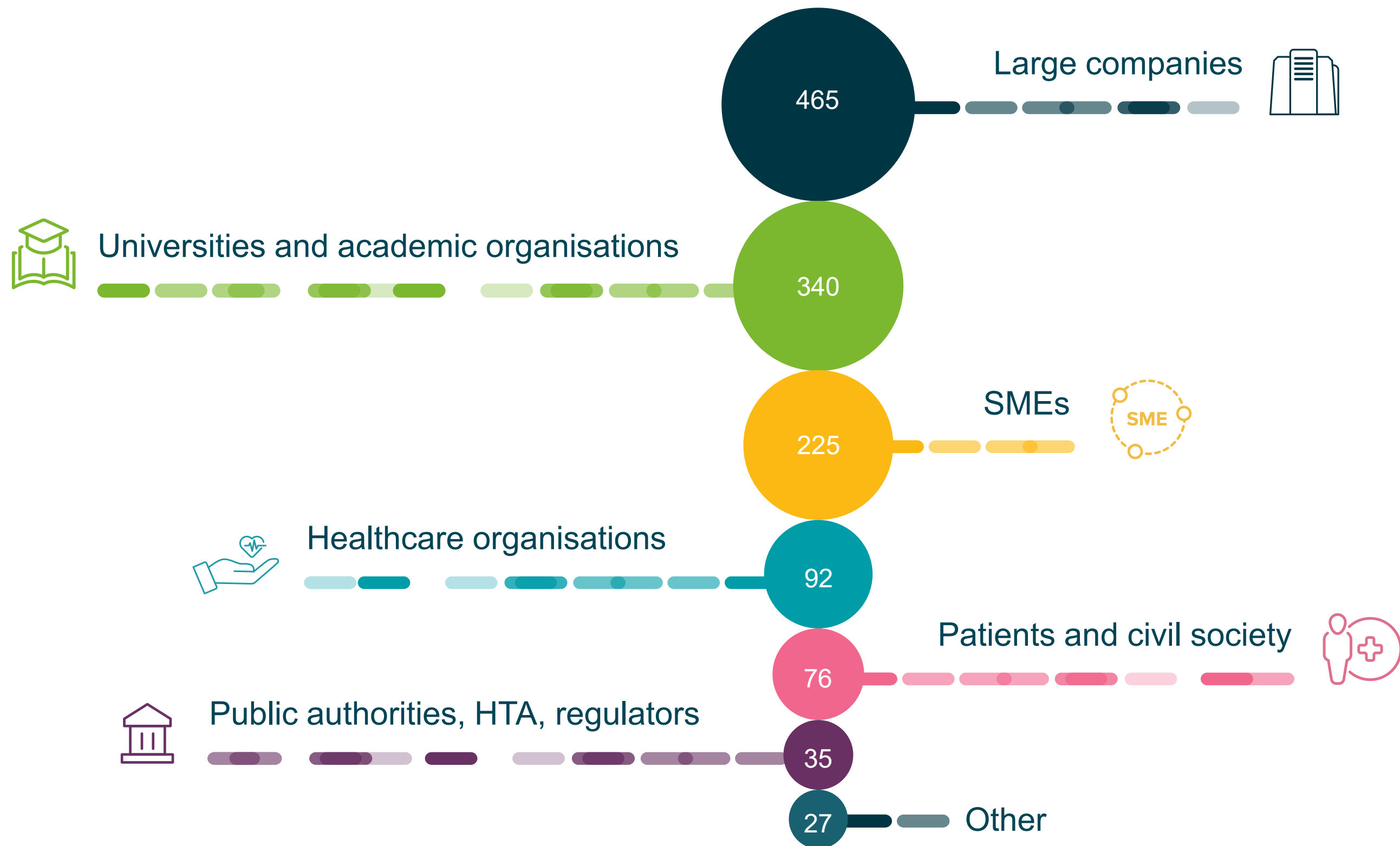


... and so are our projects



Collaboration is part of our DNA

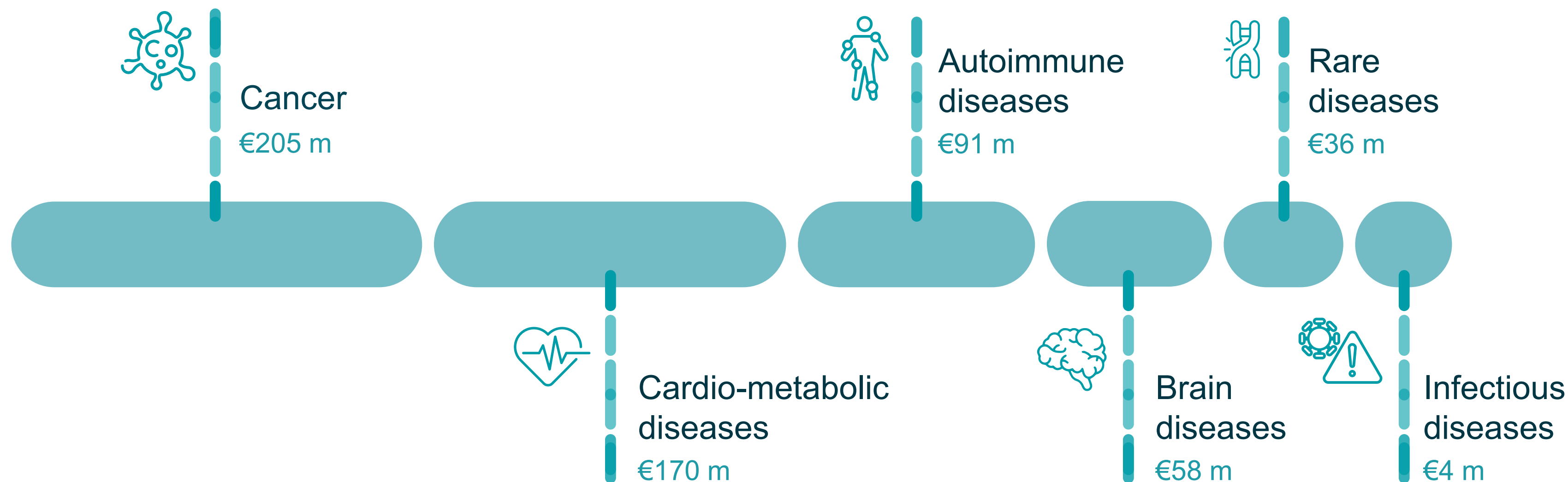
Bold collaborations– the IHI community





Transforming health

– funding challenging areas



Not included in these figures: projects addressing more than one disease area (€75 m), and projects tackling cross-cutting issues in health research (€229 m).

What are our projects delivering?

Better understanding of the causes of disease – so that we can improve prevention, diagnosis and treatment



Resources and networks to make clinical trials work better for patients and researchers



Techniques to make healthcare more patient-friendly



Markers to help spot when a treatment is working – and when it isn't

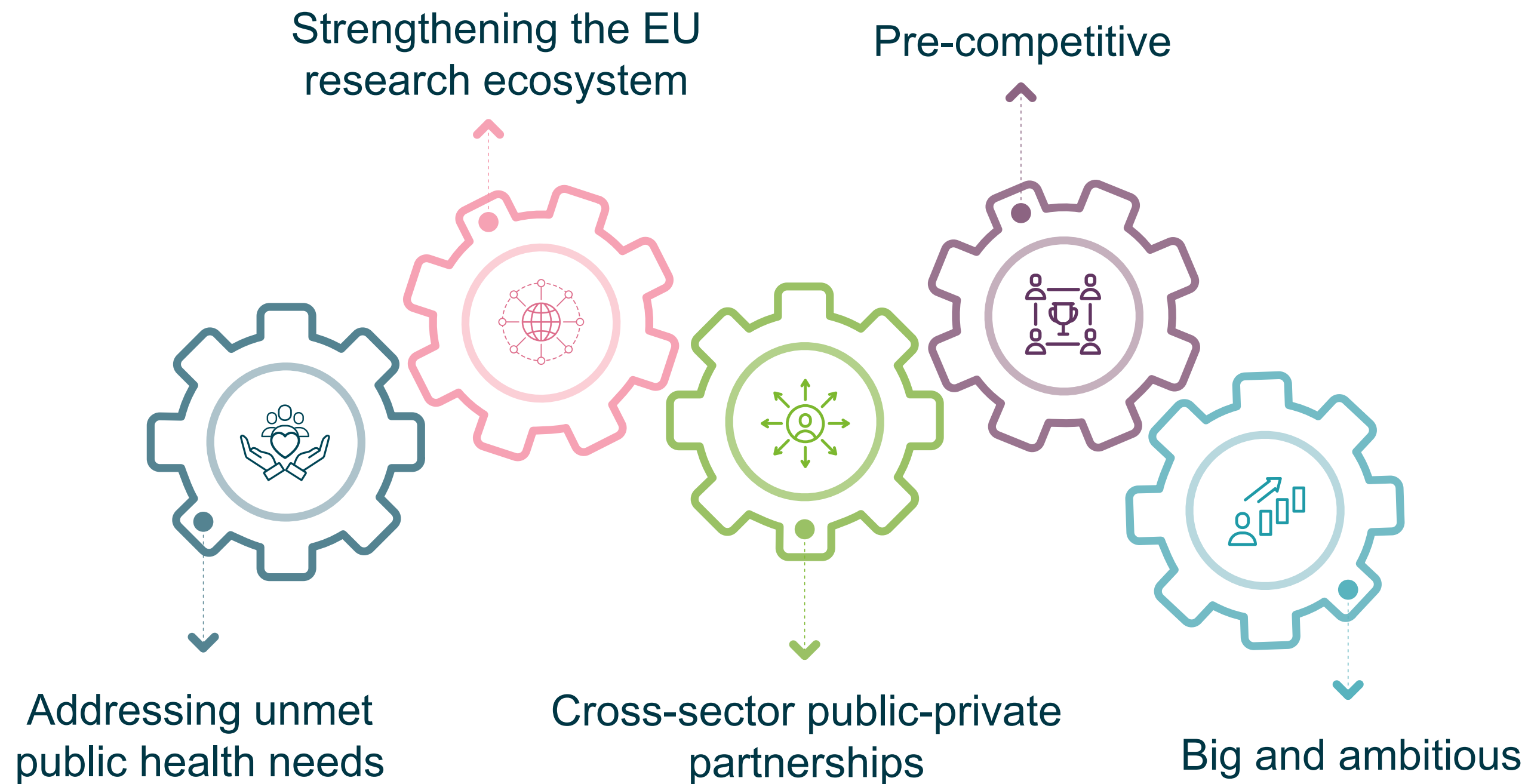


Guidance on how to make maximum use of health data – while respecting patient privacy



What does an IHI project look like?

IHI projects are...





Spotlight on an IHI project: EDENT1FI

IHI Call 3 - Topic 1: Screening platform and biomarkers for prediction and prevention of diseases of unmet public health need – single stage

Some 9 million people worldwide have type 1 diabetes (T1D). 90% of those diagnosed have no family history of T1D and so are not picked up by these efforts.

Addressing
unmet public
health need

Strengthening
EU research
ecosystem

Impact at
system level

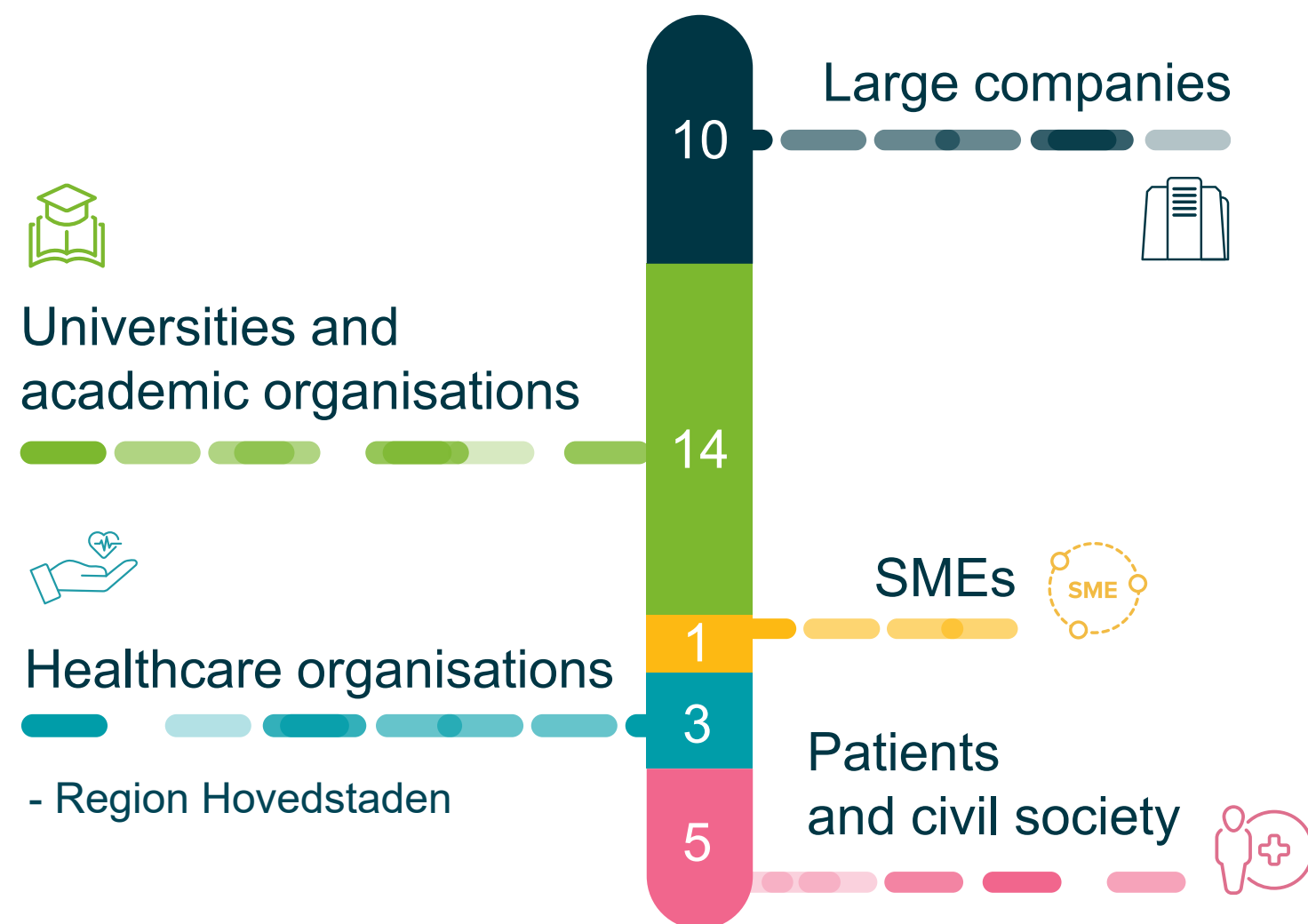
Precompetitive

- The aim of EDENT1FI is to improve the early detection of T1D by setting up a pan-European open platform to screen 200 000 children and adolescents;
- Assess the psychosocial, medical and economic impacts of screening for T1D in different health systems and populations;
- Refine the biomarkers used to determine a person's risk of developing T1D;
- Design clinical trials of novel treatments that could stop the disease.

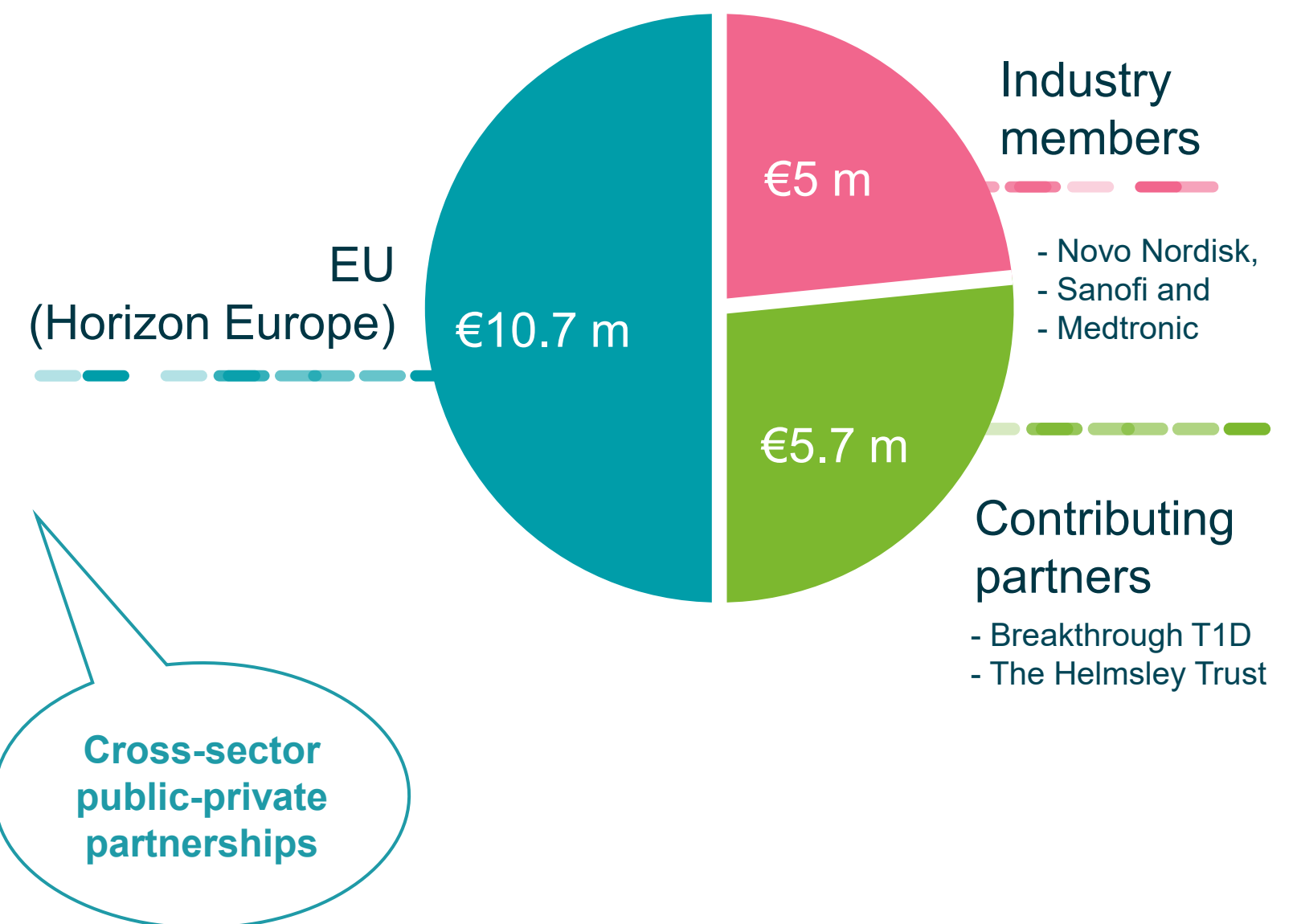
Learnings from the project could also be applied to other childhood diseases.

Spotlight on an IHI project EDENT1FI

● Project partners



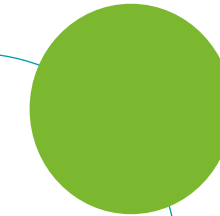
● Project funding



ihi.europa.eu/projects-results/project-factsheets/edent1fi



Participación de la Comunidad Valenciana





Participación de la Comunidad Valenciana

Committed EU Fin Contribution

4.888.960

Signed Grants

9

Participations

10

Participants

6

Applications Success Rate

28,6%

Proposal Success Rate

25,8%

IHI CALLS 1 - 8 ES NUT2	Participaciones	Participantes	Contribución EU
Cataluña	58	35	24,1 M€
C. de Madrid	47	26	22,6 M€
C. Valenciana	10	6	4,8 M€
Andalucía	11	5	3,6 M€
País Vasco	5	4	2,9 M€
C. F. Navarra	2	2	1,1 M€
Galicia	1	1	0,77 M€
Aragón	1	1	0,73 M€
Castilla y León	1	1	0,52 M€
Illes Balears	1	1	0,34 M€

Programa	Participantes	Contribución EU
IHI	9	4.888.960
IMI2	10	6.989.254
IMI	1	50.471
TOTAL	20	11.928.685



Participación de la Comunidad Valenciana

Organisation	Role	IHI Project	Topic Title
EDWARDS LIFESCIENCE	Participant	GREG	Development of evidence based practical guidance for sponsors on the use of real-world data / real-world evidence
ACTIVAGE	Participant	GRACE	Improving clinical management of heart disease from early detection to treatment
OUTCOMES'10	Participant	GRACE	Improving clinical management of heart disease from early detection to treatment
OUTCOMES'10	Participant	EuroHeartPath	Improving clinical management of heart disease from early detection to treatment
FISABIO	Participant	READI	Inclusive clinical studies for equitable access to clinical research in Europe
ACTIVAGE	Participant	ENKORE	Safe & Sustainable by Design (SSbD) packaging and single use device solutions for healthcare products
AIMPLAS	Participant	PharmEco	Sustainable circular development and manufacturing of healthcare products and their quantitative environmental impact assessment
HULAFE	COORDINATOR	SYNTHIA	Maximising the potential of synthetic data generation in healthcare applications
HULAFE	Participant	PREDICTOM	Screening platform and biomarkers for prediction and prevention of diseases of unmet public health need
HULAFE	Participant	IDERHA	Access and integration of heterogeneous health data for improved healthcare in disease areas of high unmet public health need



Próxima convocatoria:
Call 12





Two types of calls for proposals

single-stage

Broad topic, not specific to one single product/technology/solution

Private members (industry) apply simultaneously with public members in mixed consortia (like in HE regular calls)

Due to its openness and competitive character, private members can receive funding, but pharma companies will abstain from requesting funding

Budget includes at least 45% in-kind contribution (e.g. 10 million total budget: up to 5.5 mln costs funded by IHI, at least 4.5 in-kind provided by members of founding associations)

two-stage

Topics are more prescriptive, and budgets are determined by private members

Public members (applicant consortia of beneficiaries requesting funding) submit a short proposal at stage one

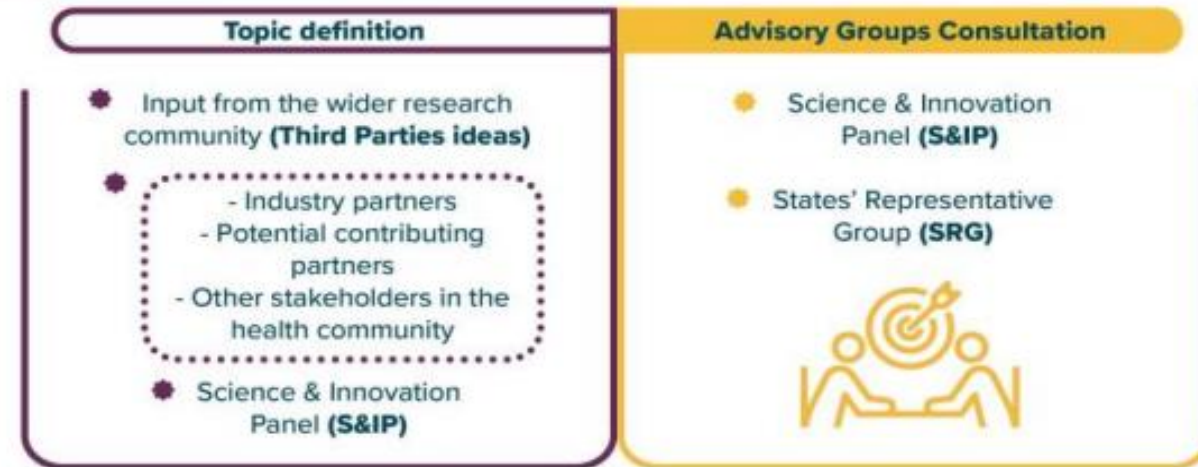
The successful applicant consortium joins with the pre-identified industry consortium (private members) at second stage

Private members are not eligible for funding (i.e. any company with annual turnover > 500M)

No requirement for applicant consortia to provide in-kind contributions in a two-stage process

Two types of calls

SINGLE-STAGE PROCEDURE



Topic texts are approved by the IHI Governing Board, as part of the Annual Work Programme

CALL LAUNCH



Granting phase

Signature of Grant Agreements
between project coordinator and IHI JU

Signature of Consortium Agreements
between partners

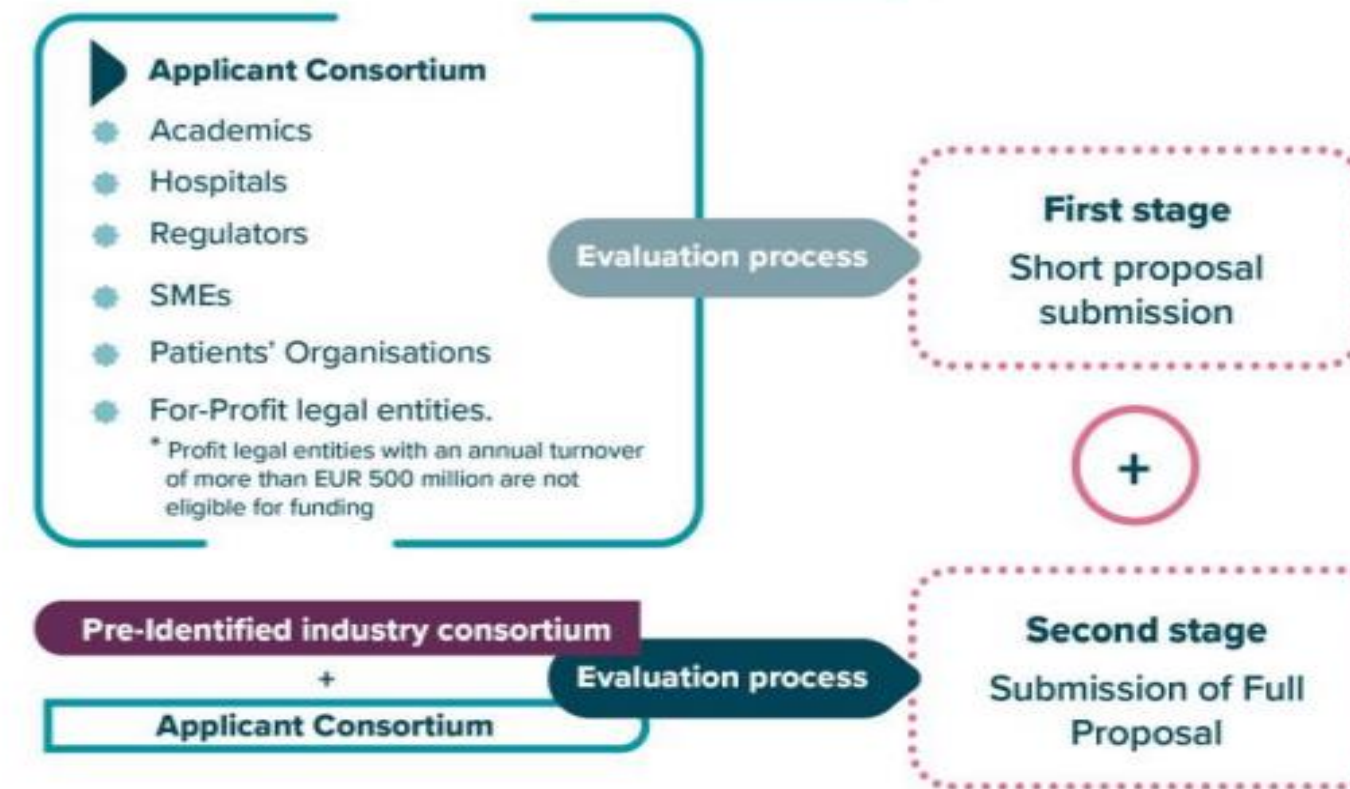
PROJECT LAUNCH

TWO-STAGE PROCEDURE



Topic texts are approved by the IHI Governing Board, as part of the Annual Work Programme

CALL LAUNCH



Granting phase

Signature of Grant Agreements
between project coordinator and IHI JU

Signature of Consortium Agreements
between partners

PROJECT LAUNCH



● IHI Call 12 - an applicant-driven Call

- New applicant-driven Call, taking into account experience from pilot Call 9.
- Create additional research opportunities and harness new science and technologies through a broad scope.
- Be attractive to innovative proposals and to a range of new stakeholders including smaller players, private members that might be not already involved in IHI activities.
- Provide opportunities for new cross sectoral collaborations in line with IHI's general and specific objectives.
- Enhance openness and co-creation of research ideas to projects.



● Call topic text – early publication of drafts

- The topic text is the key document for applicants, but also for experts evaluating the proposal
- Publication of drafts several months ahead of the call launch, with updates after consultation with IHI governance bodies
- Thinking ahead: consult the [Science and Innovation Panel meeting reports](#)



IHI Call 12 – Boosting innovation for a competitive European health ecosystem

- Expected to be launched in January 2026
- Indicative budget per topic already in the published call text
- IHI Call 12 comprises 5 topics, each focusing on one of the five IHI Specific Objectives (SOs)
- The call contains an introduction and general elements to be considered for all topics
- The overall aim is to fund pre-competitive research and innovation actions that are in line with the general objectives of IHI and address at least one of IHI SOs as set out in the IHI [Strategic Research and Innovation Agenda](#)

IHI's purpose – from objectives to impacts





What's in the SRIA?

For each **specific objective**, the *Strategic Research and Innovation Agenda* explains in detail:



Strategic Research
and Innovation
Agenda



- the current challenges
- how IHI could address them
- suggests potential outputs for IHI projects
- describes the medium to long-term impacts



Scope – example for topic 1

SPECIFIC OBJECTIVE 1:

Contribute towards a better understanding of the determinants of health and priority disease areas

CHALLENGE:

For many health conditions, we lack full understanding of the underlying mechanisms, including the predisposition to disease, how environmental and genetic factors affect the occurrence and course of the diseases, what affects treatment success, etc. Consequently, it is difficult to develop adequate prevention strategies, accurate and timely diagnostics, and targeted therapeutic interventions. In order to develop innovative interventions ranging from health promotion to treatment, a better knowledge and understanding of the biological mechanisms is paramount. By elucidating the mechanisms of diseases and factors contributing to health status, IHI can provide better targets and approaches to develop new and more precise personalised health innovations for prevention, diagnosis and therapy, as well as facilitating good health while aging.


SCOPE:

The Innovative Health Initiative will cover the identification of new mechanisms underlying health status and disease development, biomarker identification and validation as well as elucidating potential new mechanisms for therapeutic actions, including innovative methods of data exploitation. The scope will also cover standardisation activities to facilitate the development of new health technologies, better identify individuals with disease predisposition, predict and monitor disease progression and assess the efficacy of targeted treatments.

In the specific context of IHI as a cross-sectoral partnership, more efficient use of various research tools or paradigms offered by emerging industry sectors (e.g. innovative imaging methods, robotics or artificial intelligence) may bring a new insight to understanding of health and disease. Using the services from European Research Infrastructures ⁽¹⁷⁾ for digitalised research (with reproducible workflows, data management and analysis, complex modelling and *in silico* simulation) could be beneficial.

POTENTIAL OUTPUTS ⁽¹⁸⁾:

- Increased understanding of health and disease mechanisms at a molecular level.
- Newly identified and validated biomarkers for disease interception, diagnosis, progression and treatment monitoring tested in real-world settings.
- Identification of common environmental factors, including social, with understanding of their impact on molecular mechanisms.
- Novel tools or hypotheses for new treatments tested preclinically and/or in early-stage clinical or *in silico* trials.
- Novel methods and tools to identify pre-symptomatic individuals.
- Validated protocols, diagnostic and prognostic tools (including those based on wearable devices).



Applicants must assemble a **collaborative public-private partnership consortium** reflecting the integrative and **cross-sectoral** nature of IHI JU, that can address the challenge(s) and scope of the IHI JU Specific Objective 1

⁽¹⁷⁾ The Strategy Report on Research Infrastructures Part 3 describes – through dedicated cards – each ESFRI Project and each ESFRI Landmark. A short description of the RI is given as well as updated information on the legal status, the timeline for construction/operation, and the estimated costs. <https://roadmap2021.esfri.eu/media/1252/rm21-part-3.pdf>

⁽¹⁸⁾ Output: immediate use or uptake of R&I results: e.g. results of productive interactions between producers and users of R&I (short and medium term)

Expected outcomes – example for topic 1

SPECIFIC OBJECTIVE 1:

Contribute towards a better understanding of the determinants of health and priority disease areas

CHALLENGE:

For many health conditions, we lack full understanding of the underlying mechanisms, including the predisposition to disease, how environmental and genetic factors affect the occurrence and course of the diseases, what affects treatment success, etc. Consequently, it is difficult to develop adequate prevention strategies, accurate and timely diagnostics, and targeted therapeutic interventions. In order to develop innovative interventions ranging from health promotion to treatment, a better knowledge and understanding of the biological mechanisms is paramount. By elucidating the mechanisms of diseases and factors contributing to health status, IHI can provide better targets and approaches to develop new and more precise personalised health innovations for prevention, diagnosis and therapy, as well as facilitating good health while aging.

SCOPE:

The Innovative Health Initiative will cover the identification of new mechanisms underlying health status and disease development, biomarker identification and validation as well as elucidating potential new mechanisms for therapeutic actions, including innovative methods of data exploitation. The scope will also cover standardisation activities to facilitate the development of new health technologies, better identify individuals with disease predisposition, predict and monitor disease progression and assess the efficacy of targeted treatments.

In the specific context of IHI as a cross-sectoral partnership, more efficient use of various research tools or paradigms offered by emerging industry sectors (e.g. innovative imaging methods, robotics or artificial intelligence) may bring a new insight to understanding of health and disease. Using the services from European Research Infrastructures ⁽¹⁹⁾ for digitalised research (with reproducible workflows, data management and analysis, complex modelling and *in silico* simulation) could be beneficial.

POTENTIAL OUTPUTS ⁽¹⁹⁾:

- Increased understanding of health and disease mechanisms at a molecular level.
- Newly identified and validated biomarkers for disease interception, diagnosis, progression and treatment monitoring tested in real-world settings.
- Identification of common environmental factors, including social, with understanding of their impact on molecular mechanisms.
- Novel tools or hypotheses for new treatments tested preclinically and/or in early-stage clinical or *in silico* trials.
- Novel methods and tools to identify pre-symptomatic individuals.
- Validated protocols, diagnostic and prognostic tools (including those based on wearable devices).

⁽¹⁹⁾ The Strategy Report on Research Infrastructures Part 3 describes – through dedicated cards – each ESFRI Project and each ESFRI Landmark. A short description of the RI is given as well as updated information on the legal status, the timeline for construction/operation, and the estimated costs. <https://roadmap2021.esfri.eu/media/1252/rm21-part-3.pdf>

⁽¹⁹⁾ Output: immediate use or uptake of R&I results: e.g. results of productive interactions between producers and users of R&I (short and medium term)

- **Outcomes to be defined by the applicants**, ensuring that they contribute to at least one of IHI's potential outputs linked to the relevant SO
- **Address public health needs and support the development of future health innovations**
- May cover the entire spectrum of care and be centred around disease areas, key themes or approaches such as prevention, personalised medicine, and chronic disease management. They may also include enabling solutions for digitalisation, artificial intelligence, regulatory science, greener and more sustainable healthcare, and the deployment and use of these solutions into practice.

Expected impacts – example for topic 1



- Validated ex-vivo and/or in-vivo solutions for patient monitoring during and after treatment, including those based on artificial intelligence approaches, database exploitation, computational modelling, and innovative sensing approaches.
- Improved understanding of host-pathogen (including microbiota) interactions if applicable.
- Tools to improve tracking of, and preparedness for, infectious disease outbreaks.
- Predictive models for the development of improved vaccines, taking into consideration the needs of specific populations like the elderly or children.

EXPECTED IMPACTS (%)

- Patients benefit from preventive treatment or early disease intervention before onset of symptoms.
- Prevention and early diagnosis of disease combined with better understanding of the mechanisms involved, leading to the development of more cost-effective strategies.
- Patients benefitting from improved healthcare through regular monitoring of critical parameters using validated tools.
- Development of new vaccine strategies targeted to specific sub-populations.
- Increased preparedness of EU healthcare systems for disease outbreaks.

- one or more IHI JU's expected impacts linked to the Specific Objective selected as set out in the IHI JU SRIA.
- strengthening the competitiveness of the EU's health industry
- the implementation of relevant aspects of the EU's Life Sciences Strategy (topic specific e.g. unlocking the power of new knowledge, data and AI for breakthrough innovation for topic 4)



General elements to be considered for all topics

Applicants should consider the following points in their proposals:

- a) Address an **unmet public health need** based on at least one of the below:
 - high burden of disease for patients and/or society
 - high economic impact of the disease for patients and society;
 - transformational nature of the potential results on innovation processes
- b) Demonstrate the **ability to translate research into innovative solutions** that can be integrated/implemented into the healthcare ecosystem and/or in industrial processes.



General elements to be considered for all topics

- c) Carry out a **landscape analysis** to avoid unnecessary overlap and duplication of efforts with existing initiatives/projects and to identify potential synergies and complementarities with the relevant ones. The proposal should include a plan on how to synergise with these identified initiatives.
- d) When applicable, relevant aspects of **patient-centricity** to be considered



General elements to be considered for all topics

Most activities are expected to be cross-sectoral, and may cover the whole health innovation chain including but not limited to:

- discovery of new molecules, mechanisms of action, processes, technologies;
- development and testing of these discoveries;
- development of methodologies for assessment of safety, health outcomes or health-economic evaluation;
- standardisation activities;
- contribution to regulatory science;
- pilots/proofs of feasibility including in-silico trials.

Proposals that aim to demonstrate the feasibility and/or scalability of integrating solutions into national or regional healthcare systems and/or of innovations are welcomed.

- ✓ Remember: Research should remain at the pre-competitive level and translate into solutions that can be applied by all players in the ecosystem.



Points to remember

- Make sure you understand IHI
- **Read** all the call-relevant material: topic text and IHI call-related guidance in ihi.europa.eu
- We expect strong competition - brilliant science is not enough, a well designed and effective workplan and a strong public-private partnership aiming to include all relevant stakeholders are equally important
- Ensure that all information is explicitly described to allow the expert-evaluators to assess against the evaluation sub-criteria.
- Plan the **45%** In kind contribution and aim at **50%**. This eligibility criterion applies not only at the evaluation stage but applies for the project's duration



● Prepare for success with the IHI toolbox

- Download and study the [text of IHI call 12](#)
- Inform yourself and sign up for the [IHI Call Days for call 12](#), which will be held online on 19-20 January and will cover the topics, IHI's rules and procedures, and the financial aspects of the proposal.
- Showcase your expertise and share your project proposal. Register for our [brokerage platform](#), which will remain open until the call deadline.
- Catch up on the [IHI Brokerage Event](#) pitching sessions





Recursos en español - CDTI

- [Jornada IHI Convocatoria-12](#) – ejemplo de convocatoria única
- [Jornada IHI Convocatoria-11](#) – ejemplo de convocatoria en dos fases

Ambas jornadas contienen testimonios en primera persona de evaluadores de convocatorias de IHI y de coordinadores de proyectos aprobados en pasadas convocatorias de IHI



Stay in touch



Visit us

www.ih.europa.eu



Write to us

infodesk@ih.europa.eu



Sign up
for our newsletter



Connect with us



LinkedIn
Innovative Health
Initiative (IHI)



Bluesky
[@ihieurope.bsky.social](https://bsky.app/profile/ihieurope.bsky.social)



Mastodon
[@IHIEurope@mastodon.social](https://mastodon.social/@IHIEurope)

**¡Gracias por
vuestra atención!**